

GÉNOVA

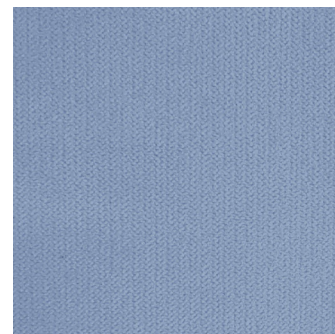


D
LECO-SIMIL



@decosimil.official

GÉNOVA



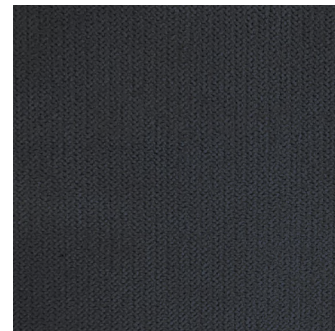
ÁRTICO



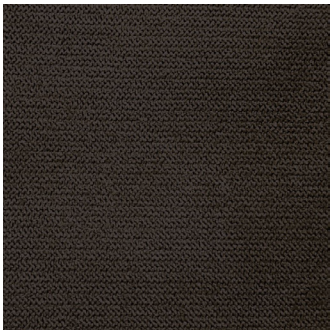
ZAFIRO



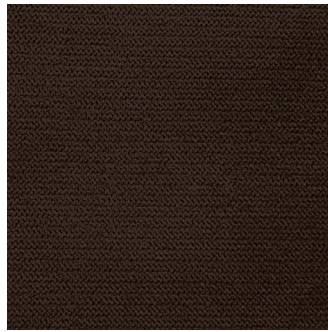
MARINO



PEWTER



TIERRA



CHOCOLATE



GRAFITO



NEGRO

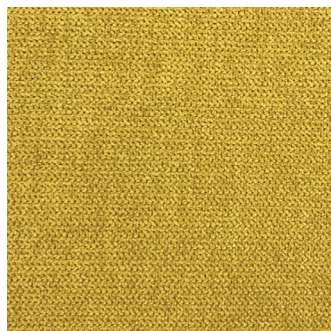


GÉNOVA

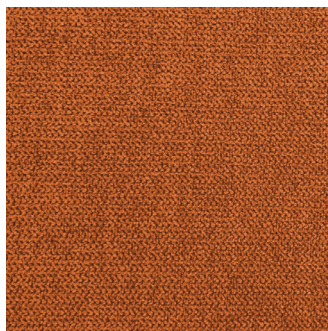
GÉNOVA



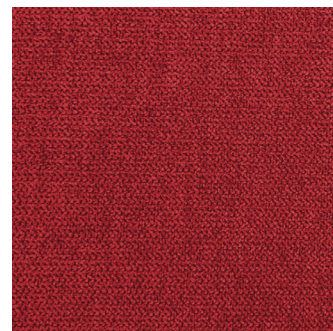
TUPE



GIRASOL



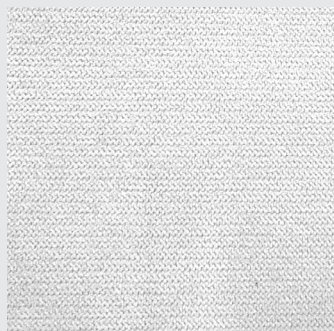
NARANJA



ROJO



GÉNOVA



NIEVE



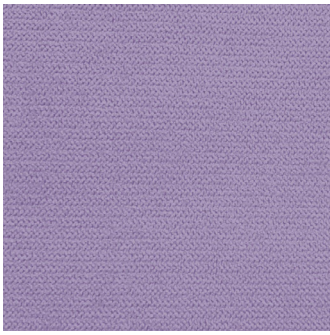
PLATA



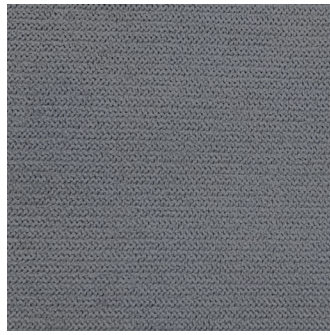
AVENA



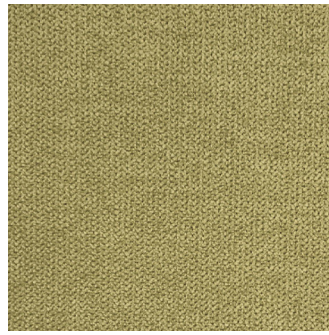
DESIERTO



LAVANDA



GRIS



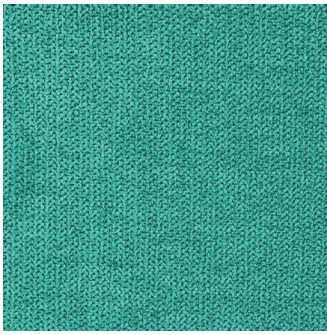
LIMA



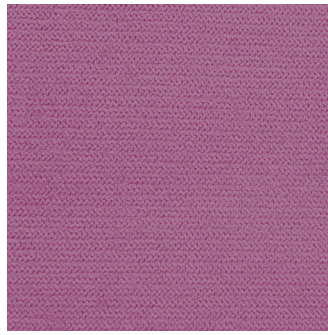
VIOLETA



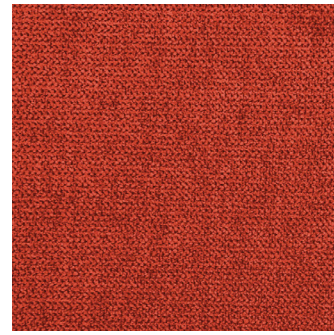
GÉNOVA



TURQUEZA



MAUVE



PAPRIKA



GÉNOVA

COLECCIÓN GÉNOVA

Ancho (mt) ASTM D751-79	1.40 + - 3 %
Composición	-100 % Poliéster
Rapport	N/A
Peso (gr / m2) ASTM D751-79	300 + - 10 %
Espesor (mm) ASTM D751-79	0,65 ± 0,1
Espesor (GAUCES) ASTM D751-79	26 ± 4
Abrasión Martindale (ciclos) ISO 12947-2:1998	50,000
Flamabilidad	-Cigarette BS-5852-06 -NFPA 260 -BS EN 1021-1:2006 (CIGARETTE) -California Flammability 117 SEC.E
Resistencia la formación de pilling (Grado 5-1) ISO 12945-2:2000 E	4
Encogimiento al lavado en seco AATCC 158	2 % máx.
Resistencia al desgarre (kg) 5136 TRAPEZOIDE	Pie : ≥ 25 Trama : ≥ 10
Resistencia a la ruptura (kg / cm) ASTM D751-79 GRAB	Pie : ≥ 20 Trama : ≥ 10
Resistencia a la costura (kg / cm) UNI 4818-92 PARTE 11A	Pie : ≥ 9 Trama : ≥ 8
Elongación a la ruptura (min / máx.) ASTM D751-79	Pie : 30/60 Trama : 15/30
Solidez del tinte al frote AATCC 8 1996	Seco : ≥ 4 Húmedo : ≥ 3-4 Alcohol-H2o : ≥ 3-4

Composición vista :  Composición soporte :  No aplica : N/A

USOS



GÉNOVA



CUIDADOS



LOS TONOS PUEDEN VARIAR DE PARTIDA A PARTIDA.